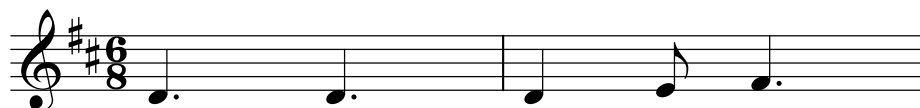




Musical Beginnings—music making for your class!

DVD and accompanying materials produced by KMEIA Qld 2008

Row, Row



Row, row, row your boat,



Gent - ly down the stream,



Mer - ri - ly, mer - ri - ly, mer - ri - ly, mer - ri - ly,



Life is but a dream.

Row, row, row your boat,
Quickly down the stream,
If you see a crocodile,
Don't forget to scream! Ah!

ACTIVITIES

Individual

- Students sit and “row their boat” with their arms on the beat. First verse slowly and second verse quickly.
- Students could walk around the room rowing their boats.

Partner

- Two children sit facing each other holding hands and rock back and forth on the beat.

Text innovation

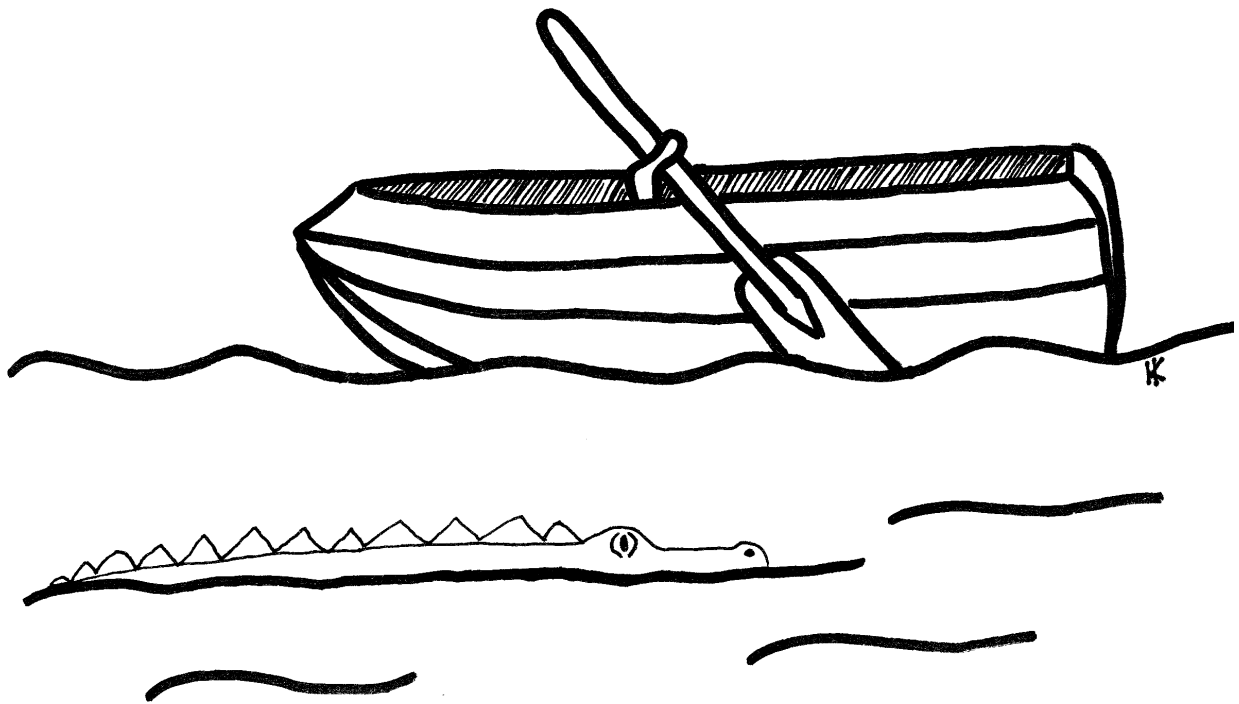
- Can you create other verses using different forms of transport? Eg Drive, drive, drive your car, quickly down the street, merrily, merrily, merrily, merrily, life is such a treat.

MUSICAL FEATURES

- Can be sung in a **canon**.
- Is in **compound** time.
- Strong and steady **beat**.
- The two verses emphasise **slow and fast**.

TONE SET (set of notes)

drmf s d'



*Row, row, row your boat
Gently down the stream,
Merrily, merrily, merrily, merrily
Life is but a dream*

*Row, row, row your boat
Quickly up the stream,
If you see a crocodile
Don't forget to scream! Ahh!*